

KW-2832

High Speed, 2-Needle, Feed of The Arm, Double Chainstitch Machine for Light & Medium Weight Material

KW-2833

High Speed, 3-Needle, Feed of The Arm, Triple Chainstitch Machine for Medium & Extremely Heavy Weight Material

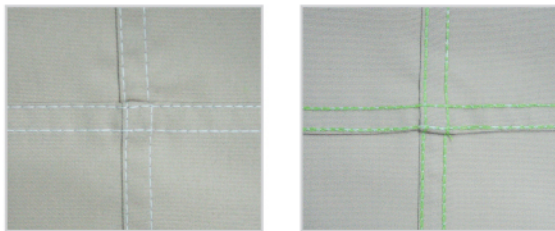


• KW-2832



• KW-2833

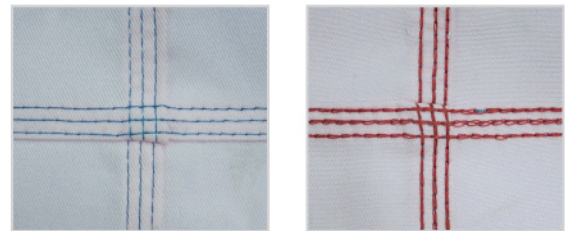
► Sewing Sample KW-2832:



Front

Back

► Sewing Sample KW-2833:



Front

Back

► Applications for the above machines:



Shirt



Jeans

Model	Sewing Speed (stitch/min)	Needle Gauge (mm)	Cylinder Bed	Tubular Circle (mm)	Needle	GW / NW (kg)	Packing Size (mm)
KW-2832	Max. 4000	4.8	Movable (effective depth : 6mm)	Min. 220	TV x 64	65 / 47	580 x 550 x 490
KW-2833	Max. 3500	6.4			TV x 5		