

# KONWA®

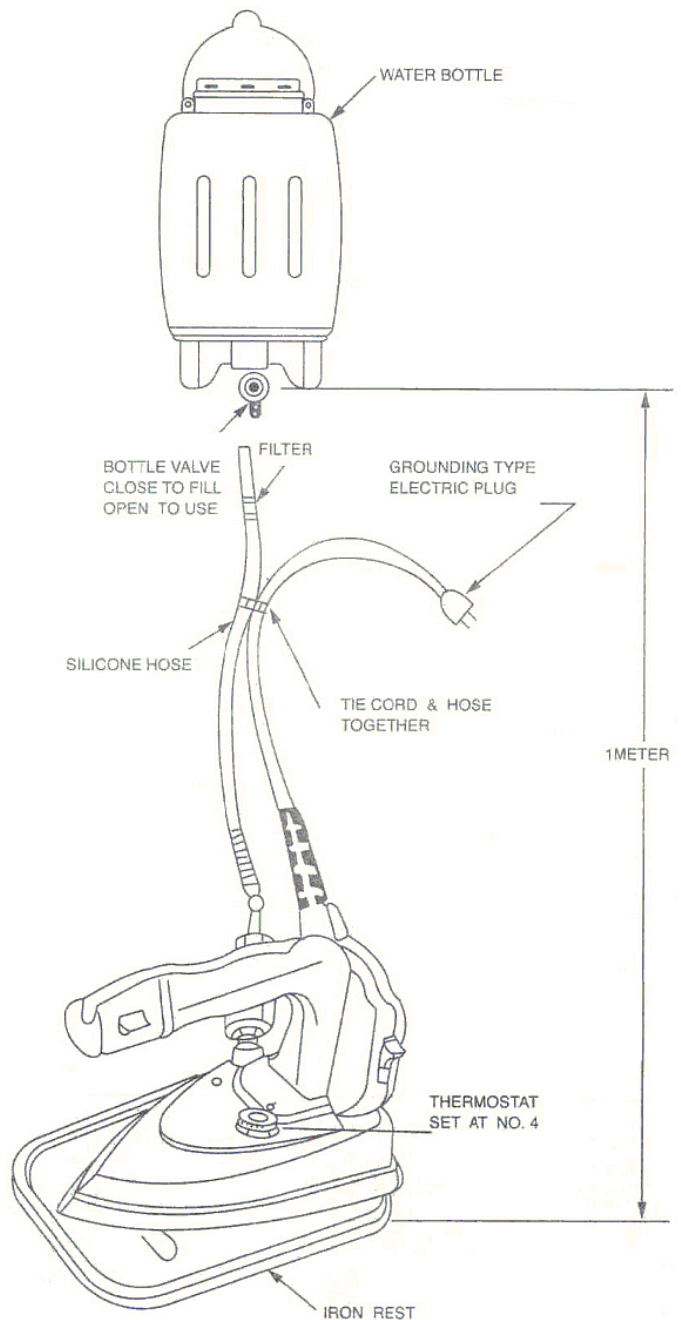
## KW-316 GRAVITY FEED STEAM IRON C/W TELFON SHOE



## INSTRUCTION MANUAL & PARTS LIST

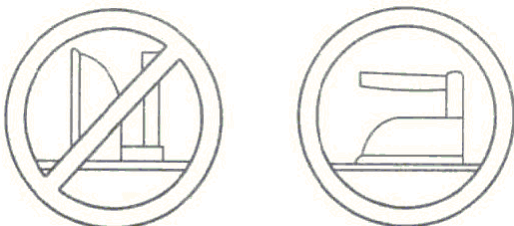
## **INSTRUCTIONS**

1. Hang water bottle one meter above ironing surface (Refer Bottle Hanging Instruction).
2. Connect one end of the hose (black colour) to the iron and the other end to the bottle.
3. Fill in bottle with tap water only.
4. Tie the electrical cord and hose together.
5. Plug in the iron cord into a grounded electrical outlet.
6. Set the temperature dial at No.4 and let the iron heat up for ten minutes.
7. Open the bottle valve and allow the hose to fill with water by pressing the steam switch. The iron is now ready for use.
8. When not using, place the iron on the supplied iron rest.
9. Always unplug the iron when unattended or not in use.

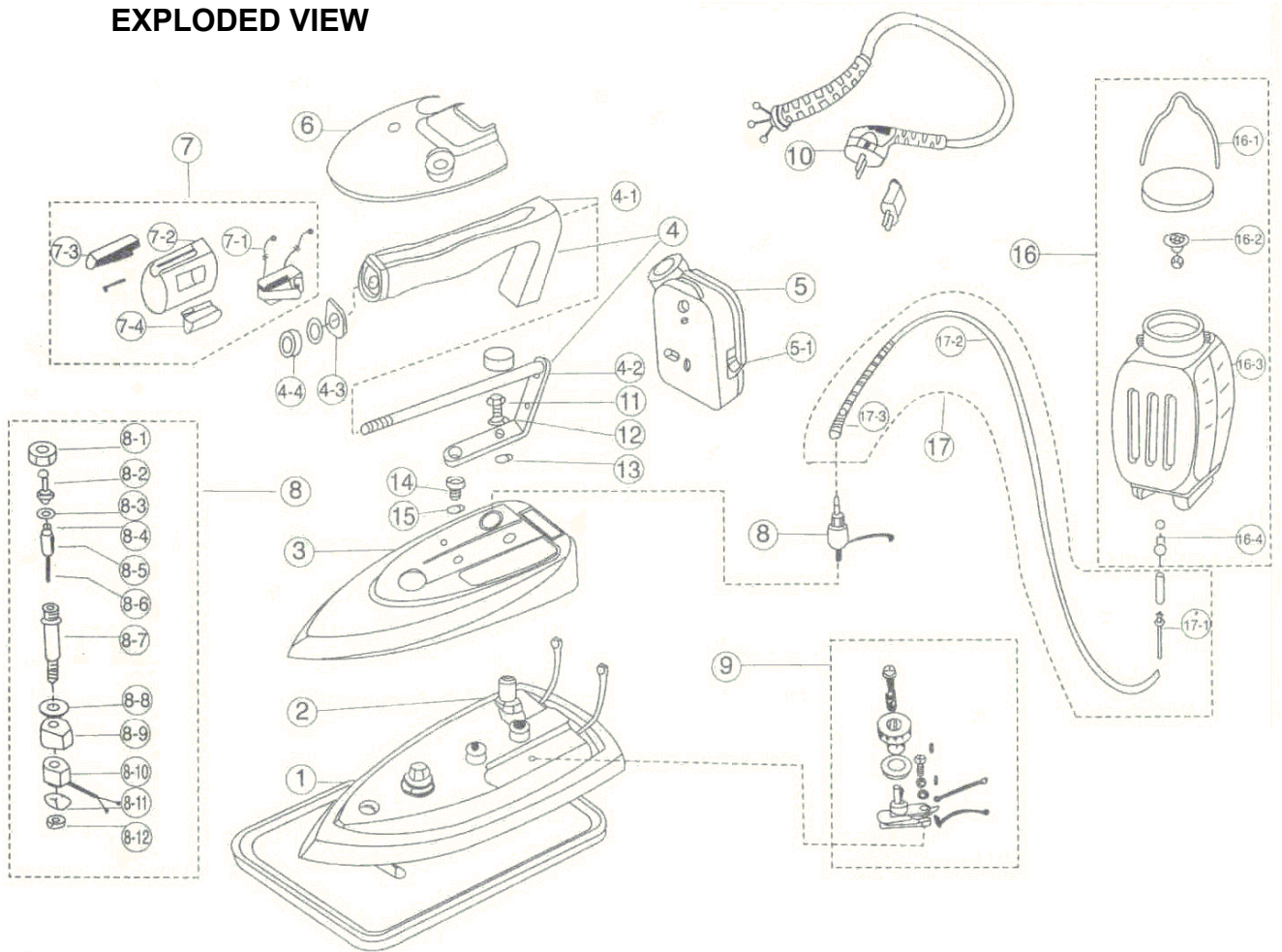


## **IMPORTANT**

Do not stand iron on its back.



## EXPLODED VIEW



NO.	PARTS NO.	DESCRIPTION
1	19047/19117	SILICONE IRON REST E
2	138200/138300	BASE ASSY 120V
	139200/139100	BASE ASSY 120V
3	19816/19835	COVER
4	118000	RUBBER HANDLE SET
4-1	11803	HANDLE
4-2	11801	HANDLE MTG. BRACKET
4-3	19838	WASHER
4-4	11006	NUT (7/16)
5	124401	MAIN SWITCH ASSY (G)
5-1	12091	ON OFF SWITCH
6	19815	THERMO SHIELED
7	118001	HANDLE CAP SET
7-1	171003	STEAM SWITCH
7-2	11802	HANDLE CAP 1
7-3	19837	HANDLE CAP 2
7-4	19839	SWITCH BUTTON
8	145100/145230	SOL. VALVE ASSY. 120V
	145110/145210	SOL. VALVE ASSY. 120V
8-1	14005	HOSE BARB NUT
8-2	14001	HOSE BARB SOLENOID
8-3	14004	VALVE O-RING
8-4	14007	RUBBER PACKING
8-5	14101	VALVE PIN

NO.	PARTS NO.	DESCRIPTION
8-6	14011	VALVE SPRING
8-7	1410	VALVE BODY
8-8	54001	VALVE NAME PLATE
8-9	14039	COIL COVER
8-10	14501/14502	VALVE COIL 120V
8-11	14038	COIL WASHER
8-12	14019	LOCKING NUT
9	151505/151504	HT-577 THERMOSTAT ASSY
10	18904/18905	LINE CORD 120V
11	19038	BOLT HANDLE MTG. BRACKET
12	19037	MTG. BRACKER WASHER
13	19037	MTG. BRACKET WASHER
14	19817	TAP TITE SCREW (M6X1.0P)
15	19827	MTG. BRACKET WASHER
16	161000	WATER BOTTLE ASSY
16-1	16009	HANGER WATER BOTTLE
16-2	1610	FILTER
16-3	16010	WATER BOTTLE
16-4	16107	WATER VALVE
17	16108	SILICONE HOSE SET
17-1	16018	FILTER
17-2	16031	SILICONE HOSE
17-3	16003	SILICONE HOSE SPRING

Tips for ironing with professional results :-

Initially, to allow water to enter into the hose and iron, press the steam switch. This may take a few seconds, then you will see the steam come out.

Begin to iron.

For best results, it is only necessary to press the steam switch for a few seconds at a time. It is not necessary to activate the steam switch continuously.

There are several settings on your temperature dial. Recommended temperature settings are as follows :-

- #1, 2 – Preheat
- #3 – Silk and delicate fabrics (low temperature)
- #4 – Cotton and wool (medium temperature)
- #5 – Linen (high temperature)

A telfon shoe is recommended to prevent garment shine and starch built-up.

When unattended or not in use, always turn off and unplug your iron.

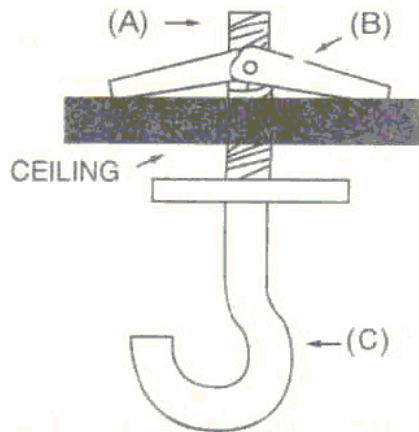
### **TROUBLE SHOOTING GUIDE**

PROBLEM	PROBABLE CAUSE	SUGGESTED REMEDY
Iron does not heat.	No power to iron.	Check electric outlet.
	Temperature dial is in "OFF" position.	Set temperature dial to No.3, 4 or 5.
	Temperature dial is set on No. 1 or 2.	Set temperature dial to No.3, 4 or 5.
No steam or very little steam.	Little or no water in the bottle.	Fill water with bottle.
	Bottle not high enough.	Bottle must be 36" above the ironing surface.
	Clogged filters.	Remove and rinse filter under water faucet.
	Clogged steam holes.	Clear holes with straightened paper clip.
Iron spits water.	Iron is not hot enough.	Turn temperature dial up (clockwise). Let iron heat up.
	Steam switch held down too long.	Release steam switch and let iron heat up.
Iron too hot.	Temperature dial is set too high.	Turn thermostat dial down (counter clockwise).
Iron not enough hot.	Temperature dial is set too low.	Turn thermostat dial up (clockwise).

## **CEILING HOOK INSTALLATION INSTRUCTION**

**IMPORTANT** – DO NOT SLIDE ELECTRICAL WIRE OR WATER HOSE OVER HOOK. SLIDE CHAIN LINK ONLY OVER HOOK.

**CAUTION** – Injury to persons or damage to the ceiling may result if the bottle or mounting hardware is pulled from the ceiling. To avoid such injury, mount only to ceiling member that are structurally sound.



### **FOR HOLLOW CEILINGS**

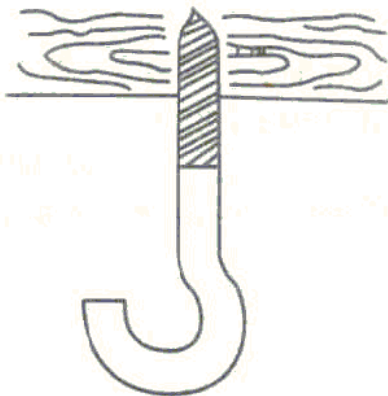
Drill 5/8" diameter hole in the ceiling at desired hook location.

Assemble toggle bolt by screwing bolt (A) into toggle (B).

Insert flaps and bolt assembly (A / B) hinge up into ceiling hole with the bolt (A) protruding through ceiling. Lock assembly by turning hook (C) clockwise until firmly seated.

### **FOR WOOD BEAM CEILINGS**

Screw hook clockwise into ceiling until firmly seated.



### **FOR EITHER METHOD**

Hang the bottle assembly by a chain from the hook so that the bottom of the bottle is 1 meter (1 yardstick) from the water inlet on the iron.

# KONWA®

**KONWA INDUSTRIAL SEWING MACHINE (M) SDN BHD** (124740-M)

Head Office: Lot 11 & 13, Jalan 51/201, Off Jalan Tandang, Seksyen 51, 46050 Petaling Jaya,  
Selangor Darul Ehsan, Malaysia.

Tel: +603-7788 1111

Fax: +603-7788 5555

E-mail: [konwa@konwa.com.my](mailto:konwa@konwa.com.my) URL: [www.konwa.com.my](http://www.konwa.com.my)